

552-151 Baseball Backstop Transporter

Page 1 of 1
Rev 01/14/2005

IMPORTANT

Please retain this instruction sheet in your files. It contains important maintenance instructions, as well as replacement parts information.



Install extra wheels on both sides of the transporter in these locations

WF 1 553-951 1 3/8" OD Transporter Assembly

Wheel Assembly

2	555-901	Wheel
2	116-918	5/8" x 4" Hex Bolt
4	316-901	Flat Washer

1 WF

70# Total Weight

CLASS 70

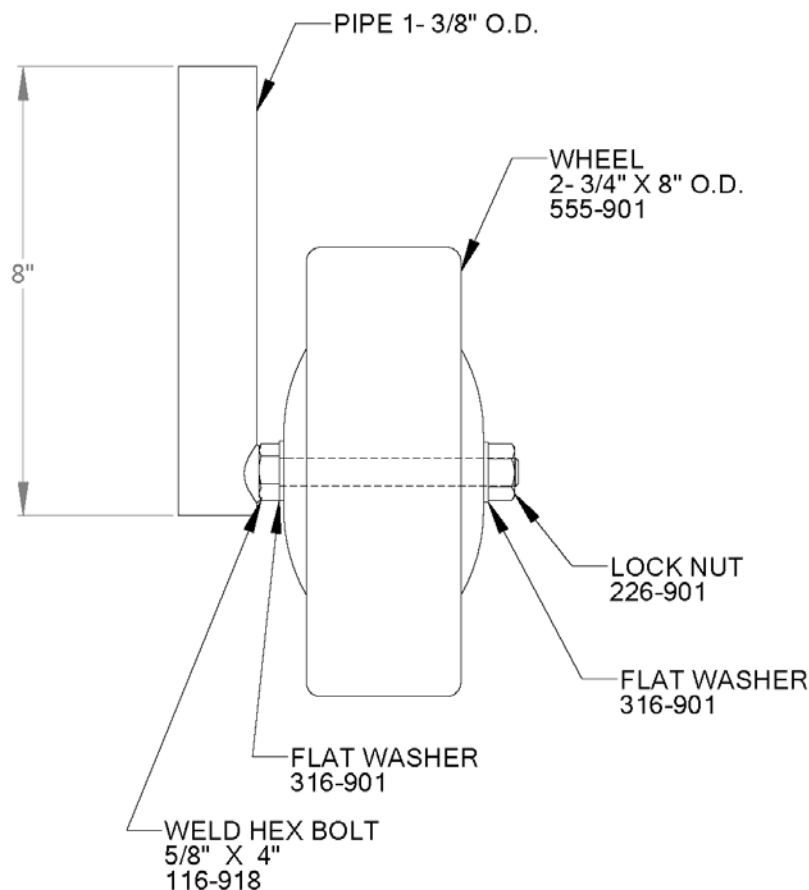
552-151 Baseball Backstop Transporter

Page 2 of 2
Rev 01/14/2005

SPECIFIC ASSEMBLY INSTRUCTIONS:

The factory assembled transporter is one welded frame with wheels attached to the ends of the extended (long) pieces and a handle welded on the top of this welded frame. The two extra wheels should fit into the welded sleeves in the frame assembly as shown on page 1 of these instructions. Once these wheels are fitted into the sleeves, the unit can be used to move a 552-410 or 552-411 SportsPlay Portable Baseball/Softball Backstop.

Backstop Wheel:



MAINTENANCE:

Check periodically for loose bolts, broken parts and replace them immediately.